

Data Transmission Lines and Their Characteristics

National Semiconductor
Application Note 806
Kenneth M. True
April 1992



Overview

This application note discusses the general characteristics of transmission lines and their derivations. Here, using a transmission line model, the important parameters of characteristics impedance and propagation delay are developed in terms of their physical and electrical parameters. This application note is a revised reprint of section two of the Fairchild Line Driver and Receiver Handbook. This application note, the first of a three part series (see AN-807 and AN-808), covers the following topics:

- Transmission Line Model
- Input Impedance of a Transmission Line
- Phase Shift and Propagation Velocity for the Transmission Line
- Summary—Characteristics Impedance and Propagation Delay

Introduction

A data transmission line is composed of two or more conductors transmitting electrical signals from one location to another. A parallel transmission line is shown in *Figure 1*. To show how the signals (voltages and currents) on the line relate to as yet undefined parameters, a transmission line model is needed.

Transmission Line Model

Because the wires A and B could not be ideal conductors, they therefore must have some finite resistance. This resistance/conductivity is determined by length and cross-sectional area. Any line model, then, should possess some series resistance representing the finite conductivity of the wires. It is convenient to establish this resistance as a per-unit-length parameter.

Similarly, the insulating medium separating the two conductors could not be a perfect insulator because some small leakage current is always present. These currents and dielectric losses can be represented as a shunt conductance per unit length of line. To facilitate development of later equations, conductance is the chosen term instead of resistance.

If the voltage between conductors A and B is *not variable* with time, any voltage present indicates a static electric field

between the conductors. From electrostatic theory it is known that the voltage V produced by a static electric field E is given by

$$V = \int E \cdot dl \quad (1)$$

This static electric field between the wires can only exist if there are free charges of equal and opposite polarity on both wires as described by Coulomb's law.

$$E = \frac{q}{4\pi\epsilon r^2} \quad (2)$$

where E is the electric field in volts per meter, q is the charge in Coulombs, ϵ is the dielectric constant, and r is the distance in meters. These free charges, accompanied by a voltage, represent a capacitance ($C = q/V$); so the line model must include a shunt capacitive component. Since total capacitance is dependent upon line length, it should be expressed in a capacitance per-unit-length value.

It is known that a current flow in the conductors induces a magnetic field or flux. This is determined by either Ampere's law

$$\int H \cdot dl = I \quad (3)$$

or the Biot-Savart law

$$dB = \frac{\mu dl \times r}{4\pi r^3} \quad (4)$$

where r = radius vector (meters)

ℓ = length vector (meters)

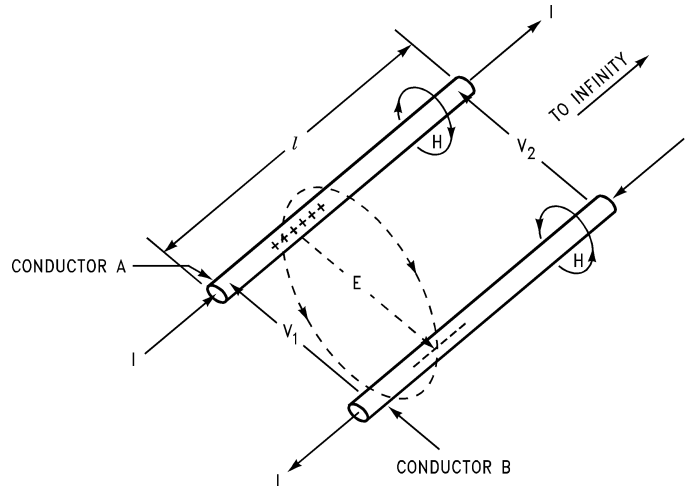
I = current (amps)

B = magnetic flux density (Webers per meter)

H = magnetic field (amps per meter)

μ = permeability

Transmission Line Model (Continued)



01133601

- I = CURRENT FLOW
- ℓ = LINE LENGTH
- E = ELECTRIC FIELD
- H = MAGNETIC FIELD

FIGURE 1. Infinite Length Parallel Wire Transmission Line

If the magnetic flux (ϕ) linking the two wires is variable with time, then according to Faraday's law

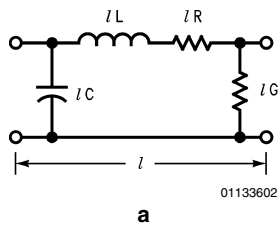
$$V = \frac{d\phi}{dt} \tag{5}$$

A small line section can exhibit a voltage drop—in addition to a resistive drop—due to the changing magnetic flux (ϕ) within the section loop. This voltage drop is the result of an inductance given as

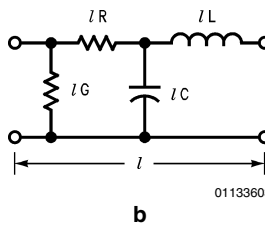
$$V = L \frac{di}{dt} \tag{6}$$

Therefore, the line model should include a series inductance per-unit-length term. In summary, it is determined that the model of a transmission line section can be represented by two series terms of resistance and inductance and two shunt terms of capacitance and conductance.

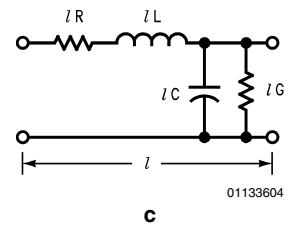
From a circuit analysis point of view, the terms can be considered in any order, since an *equivalent* circuit is being generated. Figure 2 shows three possible arrangements of circuit elements.



01133602



01133603



01133604

FIGURE 2. Circuit Elements

For consistency, the circuit shown in Figure 2 will be used throughout the remainder of this application note. Figure 3 shows how a transmission line model is constructed by series connecting the short sections into a ladder network.

Before examining the pertinent properties of the model, some comments are necessary on applicability and limitations. A *real* transmission line does not consist of an infinite number of small lumped sections—rather, it is a distributed

network. For the lumped model to accurately represent the transmission line (see Figure 3), the section length must be quite small in comparison with the shortest wavelengths (highest frequencies) to be used in analysis of the model. Within these limits, as differentials are taken, the section length will approach zero and the model should exhibit the same (or at least very similar) characteristics as the actual distributed parameter transmission line. The model in Figure

Transmission Line Model (Continued)

3 does not include second order terms such as the increase in resistance due to skin effect or loss terms resulting from non-linear dielectrics. These terms and effects are discussed in the references rather than in this application note, since they tend to obscure the basic principles under consideration. For the present, assume that the signals applied to the line have their minimum wavelengths a great deal longer than the section length of the model and ignore the second order terms.

I_{IN} is needed to produce a given voltage V_{IN} across the line as a function of the LRCG parameters in the transmission line, (see *Figure 4*).

Combining the series terms IR and IL together simplifies calculation of the series impedance (Z_s) as follows

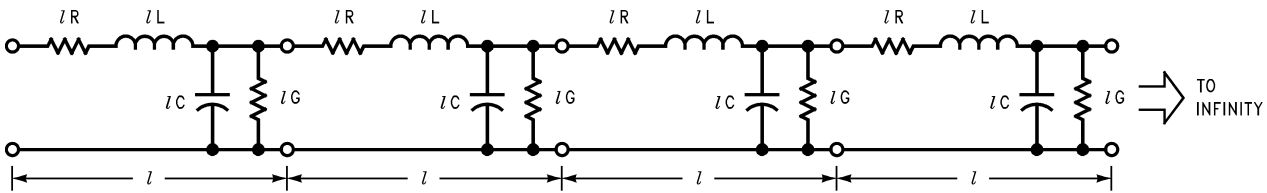
$$Z_s = \ell(R + j\omega L) \tag{7}$$

Likewise, combining IC and IG produces a parallel impedance Z_p represented by

$$Z_p = \frac{1}{Y_p} = \frac{1}{l(G + j\omega C)} \tag{8}$$

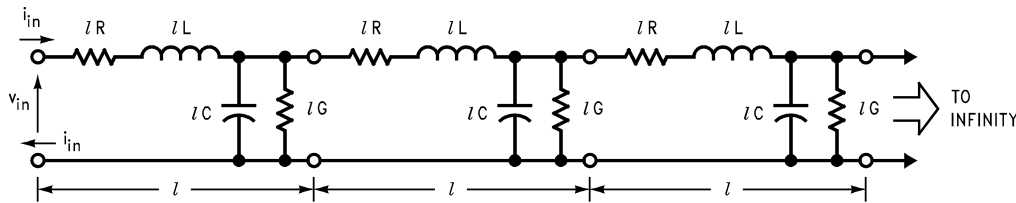
Input Impedance of a Transmission Line

The purpose of this section is to determine the input impedance of a transmission line; i.e., what amount of input current



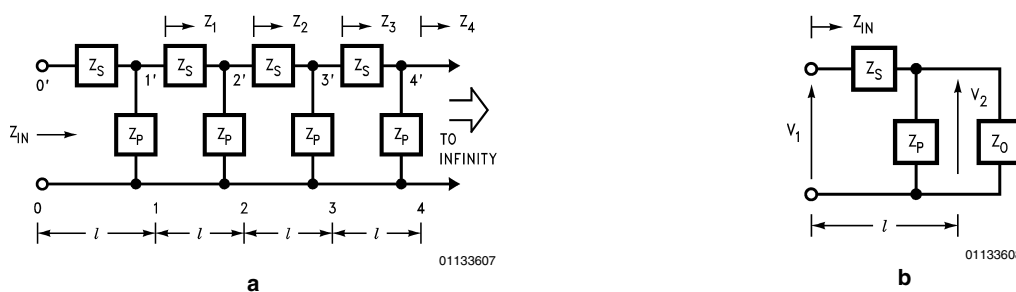
01133605

FIGURE 3. A Transmission Line Model Composed of Short, Series Connected Sections



01133606

FIGURE 4. Series Connected Sections to Approximate a Distributed Transmission Line



01133607

01133608

FIGURE 5. Cascaded Network to Model Transmission Line

Since it is assumed that the line model in *Figure 5* is infinite in length, the impedance looking into any cross section should be equal, that is $Z_1 = Z_2 = Z_3$, etc. So *Figure 5* can be simplified to the network in *Figure 5* where Z_0 is the characteristic impedance of the line and Z_{in} must equal this impedance ($Z_{in} = Z_0$). From *Figure 5*,

$$Z_{in} = Z_s + \frac{Z_0 Z_p}{Z_0 + Z_p} = Z_0 \tag{9}$$

Input Impedance of a Transmission Line (Continued)

Multiplying through both sides by $(Z_o + Z_p)$ and collecting terms yields

$$Z_o^2 - Z_s Z_o - Z_s Z_p = 0 \quad (10)$$

which may be solved by using the quadratic formula to give

$$Z_o = \frac{Z_s \pm \sqrt{Z_s^2 + 4Z_s Z_p}}{2} \quad (11)$$

Substituting in the definition of Z_s and Z_p from *Equation (7)* and *Equation (8)*, *Equation (11)* now appears as

$$Z_o = \frac{l(R + j\omega L)}{2} \pm \frac{1}{2} \sqrt{l^2 (R + j\omega L)^2 + 4 \frac{R + j\omega L}{G + j\omega C}} \quad (12)$$

Now, as the section length is reduced, all the parameters (R , L , G , and C) decrease in the same proportion. This is because the per-unit-length line parameters R , L , G , and C are constants for a given line. By sufficiently reducing l , the terms in *Equation (12)* which contain l as multipliers will become negligible when compared to the last term

$$\frac{R + j\omega L}{G + j\omega C}$$

which remains constant during the reduction process. Thus *Equation (12)* can be rewritten as

$$Z_o = \sqrt{\frac{R + j\omega L}{G + j\omega C}} = \sqrt{Z_s Z_p} \quad (13)$$

particularly when the section length l is taken to be very small. Similarly, if a high enough frequency is assumed,

$$\frac{\omega}{2\pi} > 100 \text{ kHz}$$

such that the ωL and ωC terms are much larger respectively than the R and G terms, $Z_s = j\omega L$ and $Z_p = 1/j\omega C$ can be used to arrive at a lossless line value of

$$Z_o = \sqrt{\frac{L}{C}} \quad (14)$$

In the lower frequency range,

$$\frac{\omega}{2\pi} \cong 1 \text{ kHz}$$

the R and G terms dominate the impedance giving

$$Z_o = \sqrt{\frac{R}{G}} \quad (15)$$

A typical twisted pair would show an impedance versus applied frequency curve similar to that shown in *Figure 6*. The Z_o becomes constant above 100 kHz, since this is the region where the ωL and ωC terms dominate and *Equation (13)* reduces to *Equation (14)*. This region above 100 kHz is of primary interest, since the frequency spectrum of the fast rise/fall time pulses sent over the transmission line have a

fundamental frequency in the 1-to-50 MHz area with harmonics extending upward in frequency. The expressions for Z_o in *Equation (13)*, *Equation (14)* and *Equation (15)* do not contain any reference to line length, so using *Equation (14)* as the normal characteristic impedance expression, allows the line to be replaced with a resistor of $R_o = Z_o \Omega$ neglecting any small reactance. This is true when calculating the initial voltage step produced on the line in response to an input current step, or an initial current step in response to an input voltage step.

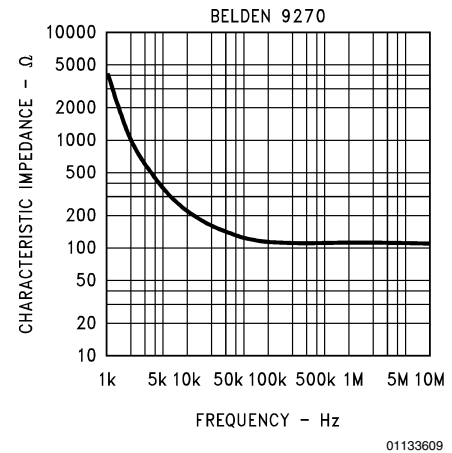


FIGURE 6. Characteristics Impedance versus Frequency

Figure 7 shows a 2V input step into a 96Ω transmission line (top trace) and the input current required for line lengths of 150, 300, 450, 1050, 2100, and 3750 feet, respectively (second set of traces). The lower traces show the output voltage waveform for the various line lengths. As can be seen, maximum input current is the same for all the different line lengths, and depends only upon the input voltage and the characteristic resistance of the line. Since $R_o = 96\Omega$ and $V_{IN} = 2V$, then $I_{IN} = V_{IN}/R_o \cong 20 \text{ mA}$ as shown by *Figure 7*. A popular method for estimating the input current into a line in response to an input voltage is the formula

$$C(dv/dt) = i$$

where C is the total capacitance of the line ($C = C$ per foot \times length of line) and dv/dt is the slew rate of the input signal. If the 3750-foot line, with a characteristic capacitance per unit length of 16 pF/ft is used, the formula $C_{total} = (C \times l)$ would yield a total lumped capacitance of 0.06 μF . Using this $C(dv/dt) = i$ formula with $(dv/dt = 2V/10 \text{ ns})$ as in the scope photo would yield

$$i = \frac{2V}{10 \text{ ns}} \times 0.06 \mu\text{F} = 12A$$

This is clearly not the case! Actually, since the line impedance is approximately 100Ω, 20 mA are required to produce 2V across the line. If a signal with a rise time long enough to encompass the time delay of the line is used ($t_r \gg \tau$), then the $C(dv/dt) = i$ formula will yield a reasonable estimate of the peak input current required. In the example, if the dv/dt is $2V/20 \mu\text{s}$ ($t_r = 20 \mu\text{s} > \tau = 6 \mu\text{s}$), then $i = 2V/20 \mu\text{s} \times 0.06 \mu\text{F} = 6 \text{ mA}$, which is verified by *Figure 8*.

Figure 8 shows that $C(dv/dt) = i$ only when the rise time is greater than the time delay of the line ($t_r \gg \tau$). The maximum input current requirement will be with a fast rise time step,

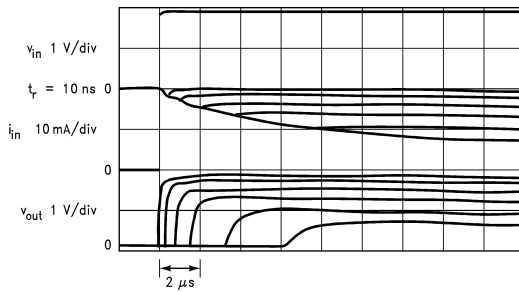
Input Impedance of a Transmission Line (Continued)

but the line is essentially resistive, so $V_{IN}/I_{IN} = R_0 = Z_0$ will give the actual drive current needed. These effects will be discussed later in Application Note 807.

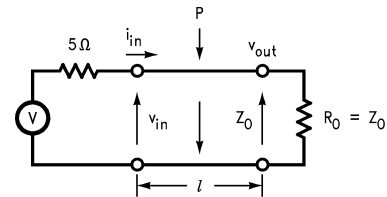
Phase Shift and Propagation Velocity for the Transmission Line

There will probably be some phase shift and loss of signal v_2 with respect to v_1 because of the reactive and resistive parts

of Z_s and Z_p in the model (Figure 5). Each small section of the line (ℓ) will contribute to the total phase shift and amplitude reduction if a number of sections are cascaded as in Figure 5. So, it is important to determine the phase shift and signal amplitude loss contributed by each section.



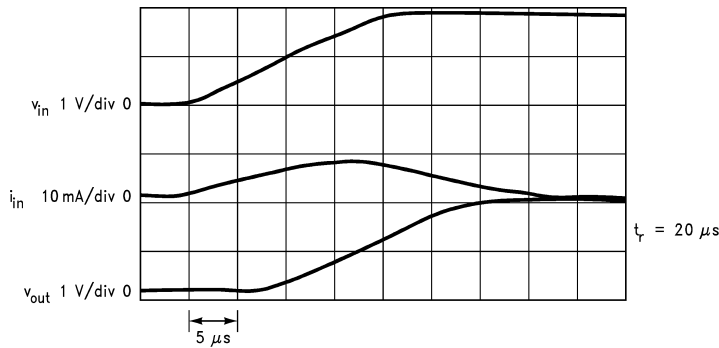
01133610



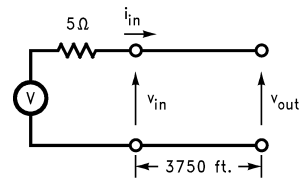
01133611

$\ell = 150, 300, 450, 1050, 2100, 3750$ ft.
24 AWG TWISTED PAIR $R_0 \approx 96\Omega$

FIGURE 7. Input Current Into a 96Ω Transmission Line for a 2V Input Step for Various Line Lengths



01133612



01133613

$R_0 = 96\Omega, \delta = 1.6$ ns/ft.

FIGURE 8. Input Current Into Line with Controlled Rise Time $t_r > 2\pi$

Phase Shift and Propagation Velocity for the Transmission Line

(Continued)

Using *Figure 5*, v_2 can be expressed as

$$v_2 = v_1 \frac{Z_p Z_0}{Z_p + Z_0} \frac{1}{Z_s + Z_p Z_0 / (Z_p + Z_0)} \quad (16)$$

or

$$\frac{v_1}{v_2} = \frac{Z_s(Z_p + Z_0) + Z_p Z_0}{Z_p Z_0} \quad (17)$$

and further simplification yields

$$\frac{v_1}{v_2} = 1 + Z_s \left[\frac{1}{Z_0} + \frac{1}{Z_p} \right] \quad (18)$$

Remember that a per-unit-length constant, normally called γ is needed. This shows the reduction in amplitude and the change in the phase per unit length of the sections.

$$\gamma_\ell = \alpha_\ell = j\beta_\ell \quad (19)$$

Since

$$v_2 = v_1^{-\gamma_\ell} = v_1^{-\alpha_\ell} + v_\ell^{-j\beta_\ell} \quad (20)$$

where $v_1^{\alpha_\ell}$ is a signal attenuation and $v_1^{-j\beta_\ell}$ is the change in phase from v_1 to v_2 ,

$$\ln \left[\frac{v_1}{v_2} \right] = \ln (\alpha_\ell + j\beta_\ell) = \alpha_\ell + j\beta_\ell = \gamma_\ell \quad (21)$$

Thus, taking the natural log of both sides of *Equation (18)*

$$\ln \left[\frac{v_1}{v_2} \right] = \ln \left[1 + Z_s \left(\frac{1}{Z_0} + \frac{1}{Z_p} \right) \right] \quad (22)$$

Substituting *Equation (13)* for Z_0 and Y_p for ℓ/Z_p

$$\gamma_\ell = \ln \left[1 + Z_s \left(\sqrt{\frac{Y_p}{Z_s}} + Y_p \right) \right] \quad (23)$$

Now when allowing the section length ℓ to become small,

$$Y_p = \ell(G + j\omega C)$$

will be very small compared to the constant

$$\sqrt{Y_p/Z_s} = 1/Z_0,$$

since the expression for Z_0 does not contain a reference to the section length ℓ . So *Equation (23)* can be rewritten as

$$\gamma_\ell = \ln \left(1 + Z_s \sqrt{\frac{Y_p}{Z_s}} \right) = \ln (1 + \sqrt{Y_p Z_s}) \quad (24)$$

By using the series expansion for the natural log:

$$\ln (1 + \zeta) = \zeta - \frac{\zeta^2}{2} + \frac{\zeta^3}{3} \dots \text{etc.} \quad (25)$$

and keeping in mind the

$$\sqrt{Z_s Y_p}$$

value will be much less than one because the section length is allowed to become very small, the higher order expansion terms can be neglected, thereby reducing *Equation (24)* to

$$\gamma_\ell = \sqrt{Z_s Y_p} = \ell \sqrt{(R + j\omega L)(G + j\omega C)} \quad (26)$$

If *Equation (26)* is divided by the section length,

$$\gamma = \frac{\gamma_\ell}{\ell} = \sqrt{(R + j\omega L)(G + j\omega C)} \quad (27)$$

the propagation constant per unit length is obtained. If the resistive components R and G are further neglected by assuming the line is reasonably short, *Equation (26)* can be reduced to read

$$\gamma_\ell = j\beta_\ell = j\omega \ell \sqrt{LC} \quad (28)$$

Equation (28) shows that the lossless transmission line has one very important property: signals introduced on the line have a constant phase shift per unit length with no change in amplitude. This progressive phase shift along the line actually represents a wave traveling down the line with a velocity equal to the inverse of the phase shift per section. This velocity is

$$v = \frac{\omega}{\beta} = \frac{1}{\sqrt{LC}} \quad (29)$$

for lossless lines. Because the LRCG parameters of the line are independent of frequency except for those upper frequency constraints previously discussed, the signal velocity given by *Equation (29)* is also independent of signal frequency. In the practical world with long lines, there is in fact a frequency dependence of the signal velocity. This causes sharp edged pulses to become rounded and distorted. More on these long line effects will be discussed in Application Note 807.

Summary—Characteristic Impedance and Propagation Delay

Every transmission line has a characteristic impedance Z_0 , and both voltage and current at any point on the line are related by the formula

$$Z_0 = \frac{v}{i}$$

In terms of the per-unit-length parameters LRCG,

$$Z_0 = \sqrt{\frac{R + j\omega L}{G + j\omega C}}$$

Since $R \ll j\omega L$ and $G \ll j\omega C$ for most lines at frequencies above 100 kHz, the characteristic impedance is best approximated by the lossless line expression

Summary—Characteristic Impedance and Propagation Delay

(Continued)

$$Z_0 \cong \sqrt{\frac{L}{C}}$$

The propagation constant, γ , shows that signals exhibit an amplitude loss and phase shift with the latter actually a velocity of propagation of the signal down the line. For lossless lines, where the attenuation is zero, the phase shift per unit length is

$$\beta = \frac{\beta l}{l} = \omega \sqrt{LC}$$

This really represents a signal traveling down the line with a velocity

$$v = \frac{\omega}{\beta} = \frac{1}{\sqrt{LC}}$$

This velocity is independent of the applied frequency.

The larger the LC product of the line, the slower the signal will propagate down the line. A time delay per unit length can also be defined as the inverse of v

$$\delta = \frac{1}{v} = \sqrt{LC} \quad (30)$$

and a total propagation delay for a line of length ℓ as

$$\tau = l\delta = l\sqrt{LC} \quad (31)$$

For a more detailed discussion of characteristic impedances and propagation constants, the reader is referred to the references below.

References

Hamsher, D.H. (editor); *Communications System Engineering Handbook*; Chapter 11, McGraw-Hill, New York, 1967.

Reference Data for Radio Engineers, fifth edition; Chapter 22; Howard T. Sams Co., New York, 1970.

Matrick, R.F.; *Transmission Lines for Digital and Communications Networks*; McGraw-Hill, New York, 1969.

Metzger, G. and Vabre, J.P.; *Transmission Lines with Pulse Excitation*; Academic Press, New York, 1969.

LIFE SUPPORT POLICY

NATIONAL'S PRODUCTS ARE NOT AUTHORIZED FOR USE AS CRITICAL COMPONENTS IN LIFE SUPPORT DEVICES OR SYSTEMS WITHOUT THE EXPRESS WRITTEN APPROVAL OF THE PRESIDENT AND GENERAL COUNSEL OF NATIONAL SEMICONDUCTOR CORPORATION. As used herein:

1. Life support devices or systems are devices or systems which, (a) are intended for surgical implant into the body, or (b) support or sustain life, and whose failure to perform when properly used in accordance with instructions for use provided in the labeling, can be reasonably expected to result in a significant injury to the user.
2. A critical component is any component of a life support device or system whose failure to perform can be reasonably expected to cause the failure of the life support device or system, or to affect its safety or effectiveness.



National Semiconductor Corporation
Americas
Email: support@nsc.com

www.national.com

National Semiconductor Europe

Fax: +49 (0) 180-530 85 86
Email: europe.support@nsc.com
Deutsch Tel: +49 (0) 69 9508 6208
English Tel: +44 (0) 870 24 0 2171
Français Tel: +33 (0) 1 41 91 8790

National Semiconductor Asia Pacific Customer Response Group

Tel: 65-2544466
Fax: 65-2504466
Email: ap.support@nsc.com

National Semiconductor Japan Ltd.

Tel: 81-3-5639-7560
Fax: 81-3-5639-7507

射频和天线设计培训课程推荐

易迪拓培训(www.edatop.com)由数名来自于研发第一线的资深工程师发起成立,致力并专注于微波、射频、天线设计研发人才的培养;我们于 2006 年整合合并微波 EDA 网(www.mweda.com),现已发展成为国内最大的微波射频和天线设计人才培养基地,成功推出多套微波射频以及天线设计经典培训课程和 ADS、HFSS 等专业软件使用培训课程,广受客户好评;并先后与人民邮电出版社、电子工业出版社合作出版了多本专业图书,帮助数万名工程师提升了专业技术能力。客户遍布中兴通讯、研通高频、埃威航电、国人通信等多家国内知名公司,以及台湾工业技术研究院、永业科技、全一电子等多家台湾地区企业。

易迪拓培训课程列表: <http://www.edatop.com/peixun/rfe/129.html>



射频工程师养成培训课程套装

该套装精选了射频专业基础培训课程、射频仿真设计培训课程和射频电路测量培训课程三个类别共 30 门视频培训课程和 3 本图书教材;旨在引领学员全面学习一个射频工程师需要熟悉、理解和掌握的专业知识和研发设计能力。通过套装的学习,能够让学员完全达到和胜任一个合格的射频工程师的要求...

课程网址: <http://www.edatop.com/peixun/rfe/110.html>

ADS 学习培训课程套装

该套装是迄今国内最全面、最权威的 ADS 培训教程,共包含 10 门 ADS 学习培训课程。课程是由具有多年 ADS 使用经验的微波射频与通信系统设计领域资深专家讲解,并多结合设计实例,由浅入深、详细而又全面地讲解了 ADS 在微波射频电路设计、通信系统设计和电磁仿真设计方面的内容。能让您在最短的时间内学会使用 ADS,迅速提升个人技术能力,把 ADS 真正应用到实际研发工作中去,成为 ADS 设计专家...



课程网址: <http://www.edatop.com/peixun/ads/13.html>



HFSS 学习培训课程套装

该套课程套装包含了本站全部 HFSS 培训课程,是迄今国内最全面、最专业的 HFSS 培训教程套装,可以帮助您从零开始,全面深入学习 HFSS 的各项功能和在多个方面的工程应用。购买套装,更可超值赠送 3 个月免费学习答疑,随时解答您学习过程中遇到的棘手问题,让您的 HFSS 学习更加轻松顺畅...

课程网址: <http://www.edatop.com/peixun/hfss/11.html>

CST 学习培训课程套装

该培训套装由易迪拓培训联合微波 EDA 网共同推出,是最全面、系统、专业的 CST 微波工作室培训课程套装,所有课程都由经验丰富的专家授课,视频教学,可以帮助您从零开始,全面系统地学习 CST 微波工作的各项功能及其在微波射频、天线设计等领域的设计应用。且购买该套装,还可超值赠送 3 个月免费学习答疑...

课程网址: <http://www.edatop.com/peixun/cst/24.html>



HFSS 天线设计培训课程套装

套装包含 6 门视频课程和 1 本图书,课程从基础讲起,内容由浅入深,理论介绍和实际操作讲解相结合,全面系统的讲解了 HFSS 天线设计的全过程。是国内最全面、最专业的 HFSS 天线设计课程,可以帮助您快速学习掌握如何使用 HFSS 设计天线,让天线设计不再难...

课程网址: <http://www.edatop.com/peixun/hfss/122.html>

13.56MHz NFC/RFID 线圈天线设计培训课程套装

套装包含 4 门视频培训课程,培训将 13.56MHz 线圈天线设计原理和仿真设计实践相结合,全面系统地讲解了 13.56MHz 线圈天线的工作原理、设计方法、设计考量以及使用 HFSS 和 CST 仿真分析线圈天线的具体操作,同时还介绍了 13.56MHz 线圈天线匹配电路的设计和调试。通过该套课程的学习,可以帮助您快速学习掌握 13.56MHz 线圈天线及其匹配电路的原理、设计和调试...

详情浏览: <http://www.edatop.com/peixun/antenna/116.html>



我们的课程优势:

- ※ 成立于 2004 年,10 多年丰富的行业经验,
- ※ 一直致力并专注于微波射频和天线设计工程师的培养,更了解该行业对人才的要求
- ※ 经验丰富的一线资深工程师讲授,结合实际工程案例,直观、实用、易学

联系我们:

- ※ 易迪拓培训官网: <http://www.edatop.com>
- ※ 微波 EDA 网: <http://www.mweda.com>
- ※ 官方淘宝店: <http://shop36920890.taobao.com>